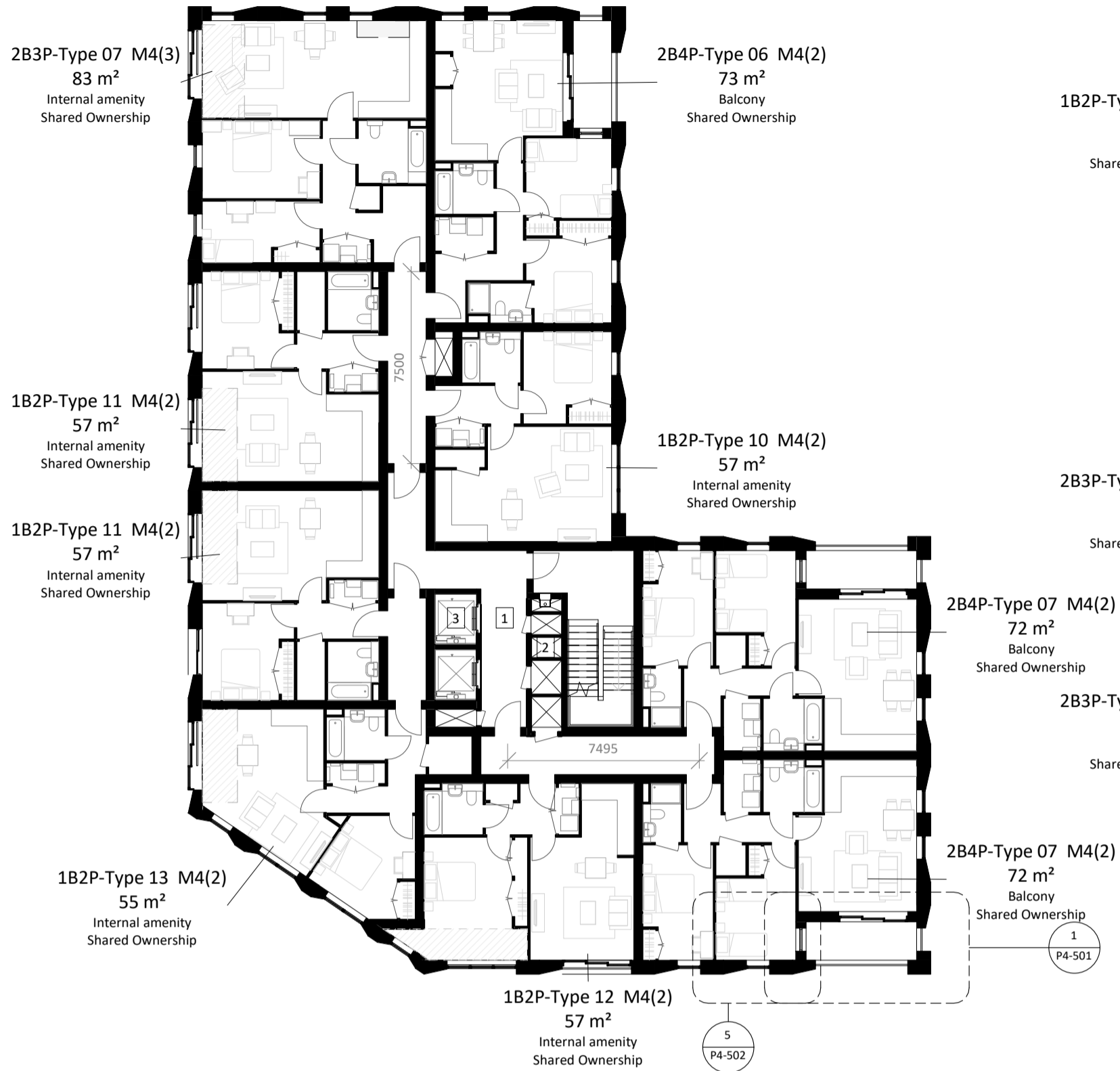
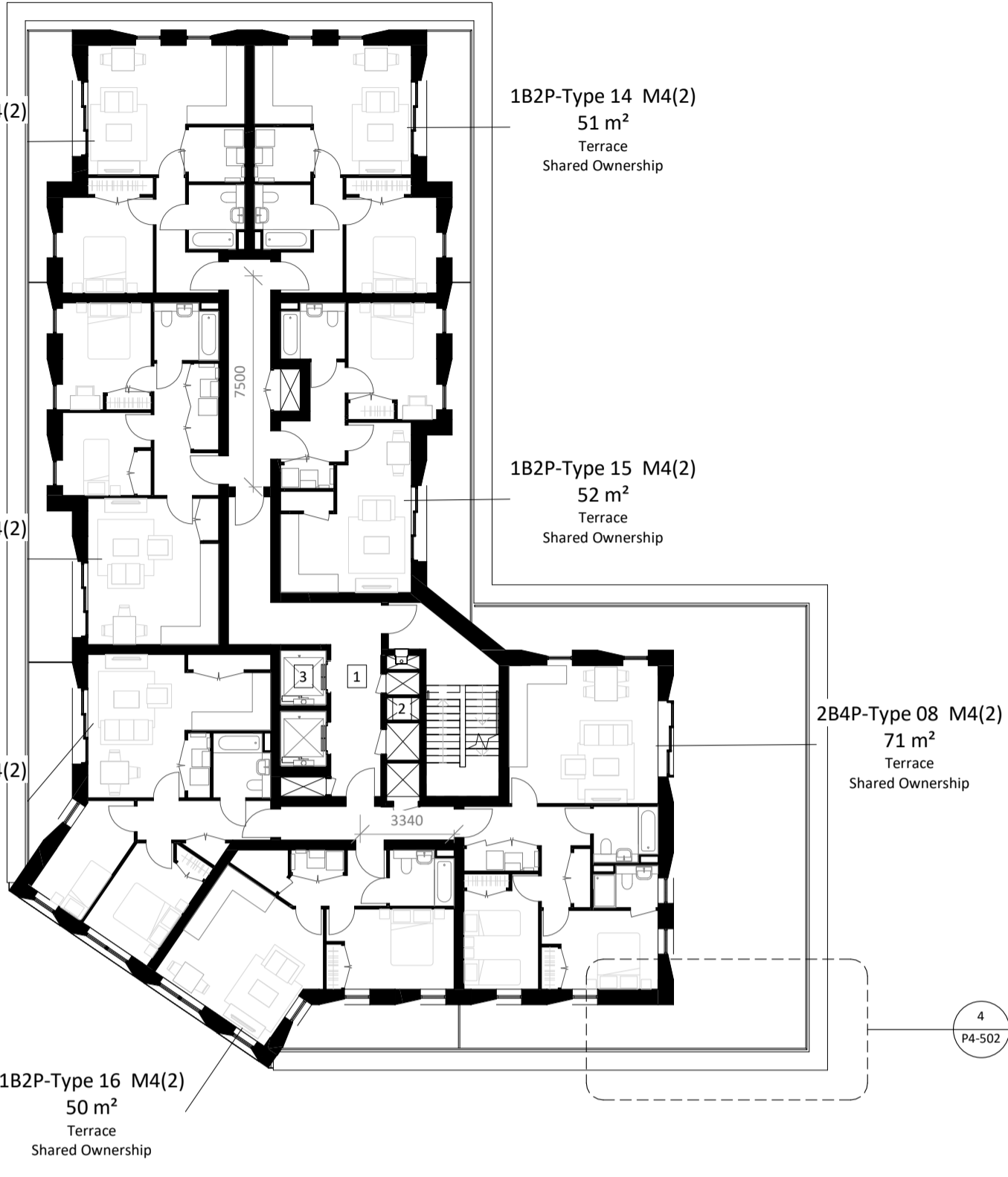


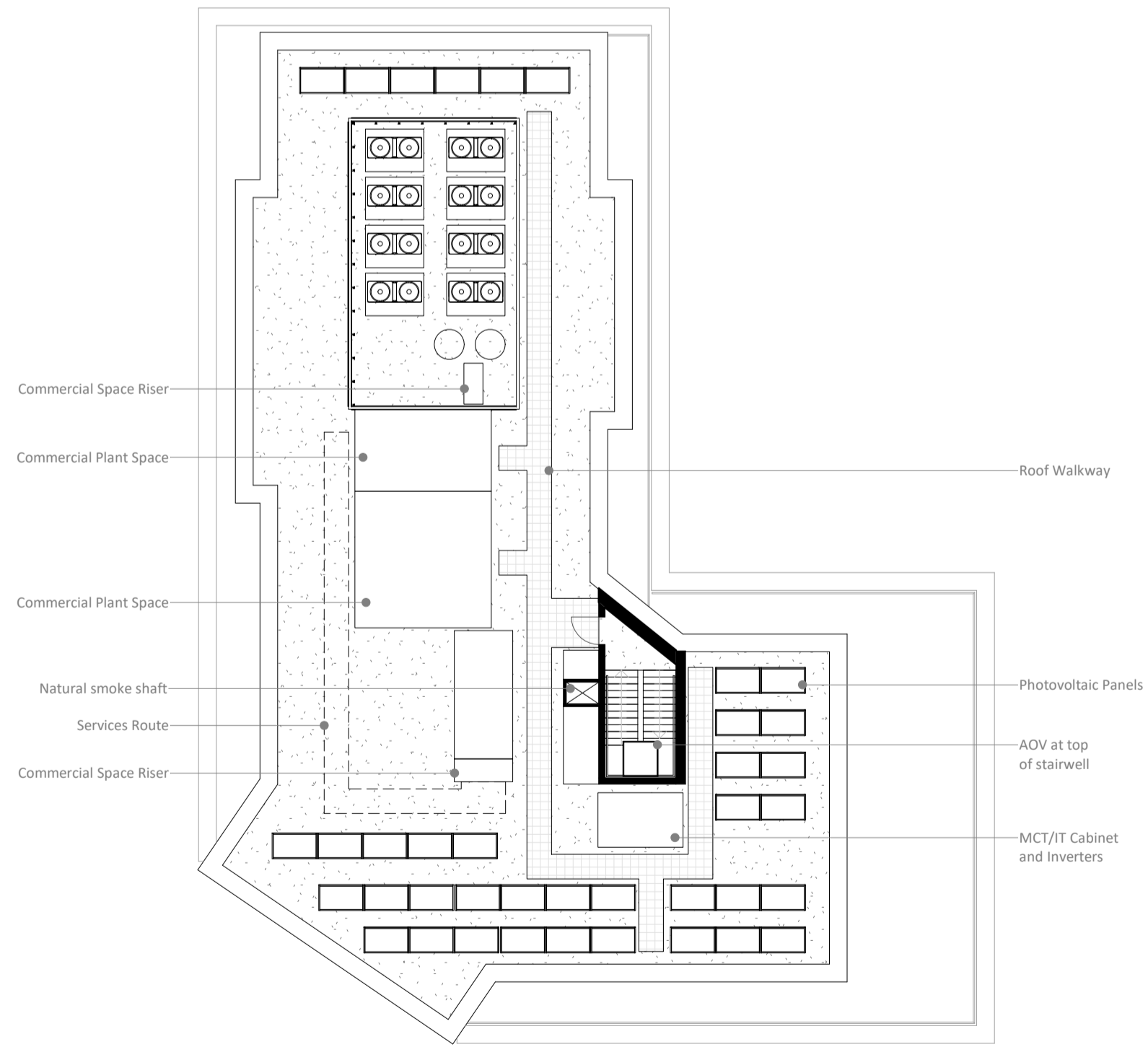
1 Building 1 - Ground Floor Plan
1 : 200



2 Building 1 - First to Sixth Floor Plan
1 : 200



3 Building 1 - Seventh Floor Plan
1 : 200



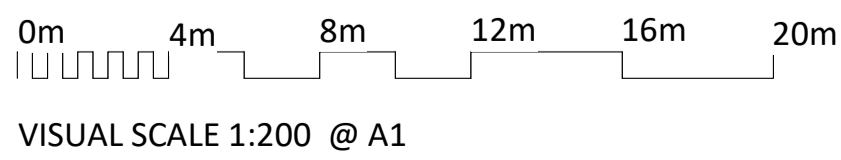
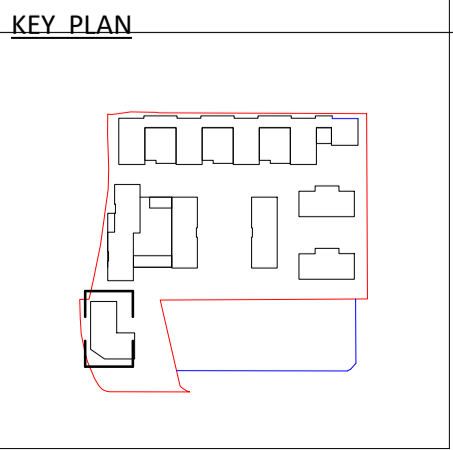
4 Building 1 - Roof Plan
1 : 200

NOTES
CONSULTANTS
- Refer to highways consultant's drawings for details
- Refer to landscape consultant's drawings for details
- Landscaping layout is indicative only

AREAS
- Refer to area schedule

© Copyright Reserved. ColladoCollins Architects Ltd

Rev	Notes	Date	By	Auth
P1	DRAFT Planning Issue	19-08-30	CS	FvB
P2	Issue for Planning	19-09-05	CS	FvB
P3	Planning amendment	19-09-24	CS	FvB
P4	Design Coordination	20-01-13	CS	JBC
P5	Update for GLA Application	20-04-07	OT	JBC
P6	Updated Landscape plan	20-07-14	OT	MG



- LEGEND: FIRE SECURITY**
- 1 Sterile ventilated staircase lobby
 - 2 AOV / Smoke shaft (min. 1.5m² section)
 - 3 Firefighting lift
 - 4 Mechanical smoke extraction duct (min. 0.6m² section)
 - 5 Natural air inlet duct

ColladoCollinsArchitects

17-19 Foley Street
London W1W 6DW
T 020 7580 3490
F 020 7580 2917
info@colladocollins.com
www.colladocollins.com

Date: 03/09/17
Drawn By: CS
Checked by: JBC
Scale @ A1: As indicated
Scale @ A3: 1 : 400
CAD File No:

Inland Homes
Hillingdon
Building 1 - Floor Plans

PLANNING
19011

P1(01)-100

P6
Revision